

# LE 600

## Rugged HMD

Tough · Reliable · Proven



The LE 600 family is a high performance rugged solution for situational awareness applications. Available in full color SVGA or monochrome video this lightweight versatile product provides a display for portable computing and remote viewing.

### 600 Family

- LE 600 For Industrial
- LE 600-5xx Military
- LE 600-541 NATO Stock Numbered



The Liteye family of products is made for many industry niches. These include but are not limited to, medical, industrial and the military arenas.

Many different accessories packages and custom firmware builds create a large selection to fit the COTS, MOTS and other custom application.

Feel free to talk to our sales representatives to find the products to fit your needs.

Visit [www.liteye.com](http://www.liteye.com) or call 720 974 1766 (MST USA) for more information.



Innovation and Quality

Contact person: [sales@liteye.com](mailto:sales@liteye.com)

# LE 600

## Specifications

<b>Display Technology</b>	Full-color AMOLED (800x3 pixels) x 600 lines	<b>Interface SVGA/VGA</b>	Standard 15 pin VGA connector
<b>Resolution</b>	800x600 and 640x480 4:3/16:9 aspect available	<b>Interface RS170/PAL</b>	RCA Connector
<b>Luminance (MAX)</b>	Several display types available: <b>color</b> : 150 cd/m <sup>2</sup> (typical) 300 cd/m <sup>2</sup> (maximum) <b>White</b> : 900 cd/m <sup>2</sup> (typical) 1800 cd/m <sup>2</sup> (maximum) <b>Green</b> : 1500 cd/m <sup>2</sup> (typical) 3000 cd/m <sup>2</sup> (maximum)	<b>Interface Custom</b>	VTH /541 Amp SCE –B-76A07-14SN 600 Water tight grip
<b>Contrast</b>	>100:1	<b>Analog Video Rates</b>	800 x600 (SVGA 56 Hz to 85 Hz), 640x480 (VGA 60 Hz to 85 Hz)
<b>FOV (diagonal)</b>	32° @ 800x600 28° @ 640x480	<b>Analog Video Inputs</b> <small>input is determined by software build and during time of assembly. Please contact a Liteye representative for further explanation</small>	RS-170 /CCIR VGA /SVGA
<b>Transmission</b>	Direct View	<b>Power</b>	5-6vDC input 400mW Typical
<b>Optics</b>	3 Element	<b>Control</b>	3 button located back, controls brightness, contrast, mode and soft off. Custom firmware builds available
<b>Eye Relief</b>	22mm	<b>Shock</b>	3 ft drop to concrete
<b>Exit Pupil</b>	4mm Pupil Forming	<b>Operating Temp</b> <b>Storage Temp</b>	-40C to +65C -50C to +80C
<b>Diopter Adjustment</b>	Fixed	<b>Immersion</b>	1 atmosphere 10 min

Specification Subject to change



Innovation with Quality

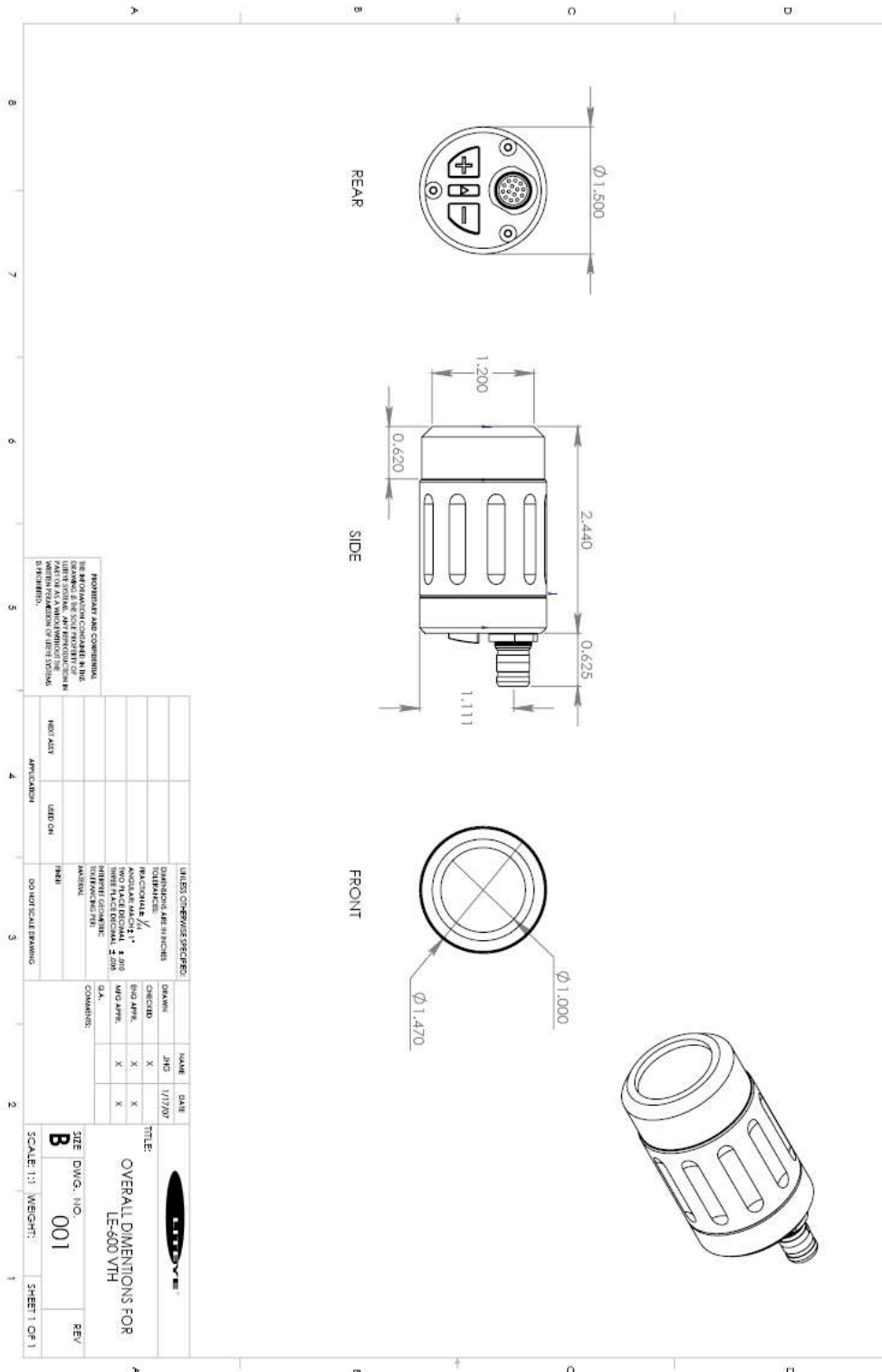
Contact person: [sales@liteye.com](mailto:sales@liteye.com)

[www.liteye.com](http://www.liteye.com)

720 974 1766

# LE 600 VTH/541

## Dimensional Specifications



Innovation with Quality

Contact person: [sales@liteye.com](mailto:sales@liteye.com)

[www.liteye.com](http://www.liteye.com)

720 974 1766

## User interface and controls



## Available Accessories and Options Examples

### Custom Cables and Termination



### Filter, covers and sliders



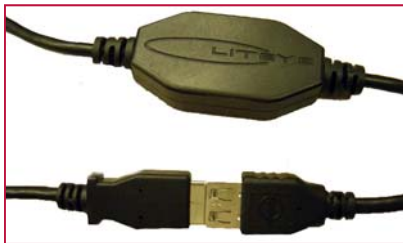
### Eye Cups



### Custom Firmware

- For user input
- External control
- Refresh rate
- Screen orientation
- Startup configuration
- And more

### Voltage Regulator



Innovation with Quality

Contact person: [sales@liteye.com](mailto:sales@liteye.com)